



ALS Canada Ltd.  
2103 Dollarton Hwy  
North Vancouver BC V7H 0A7  
Phone: 604 984 0221 Fax: 604 984 0218 www.alsglobal.com

To: KAMINAK GOLD CORPORATION  
1020 - 800 WEST PENDER STREET  
VANCOUVER BC V6C 2V6

Page: 1  
Finalized Date: 28-AUG-2012  
This copy reported on  
5-NOV-2012  
Account: KAMGOL

**CERTIFICATE WH12186475**

Project: Coffee

P.O. No.: KGC-12-1691

This report is for 150 Drill Core samples submitted to our lab in Whitehorse, YT, Canada on 9-AUG-2012.

The following have access to data associated with this certificate:

TOM BOKENFOHR

JAMES SCOTT

TIM SMITH

**SAMPLE PREPARATION**

ALS CODE	DESCRIPTION
LOG-21	Sample logging - ClientBarCode
WEI-21	Received Sample Weight
SPLIT-Z	Pulp split for send out
LOG-23	Pulp Login - Rcvd with Barcode
CRU-31	Fine crushing - 70% <2mm
CRU-QC	Crushing QC Test
PUL-QC	Pulverizing QC Test
SPL-21	Split sample - riffle splitter
PUL-31	Pulverize split to 85% <75 um

**ANALYTICAL PROCEDURES**

ALS CODE	DESCRIPTION	INSTRUMENT
Au-ICP21	Au 30g FA ICP-AES Finish	ICP-AES
ME-ICP41	35 Element Aqua Regia ICP-AES	ICP-AES

To: KAMINAK GOLD CORPORATION  
ATTN: ALS MINERALS

This is the Final Report and supersedes any preliminary report with this certificate number. Results apply to samples as submitted. All pages of this report have been checked and approved for release.

Signature:

  
Colin Ramshaw, Vancouver Laboratory Manager



ALS Canada Ltd.  
2103 Dollarton Hwy  
North Vancouver BC V7H 0A7  
Phone: 604 984 0221 Fax: 604 984 0218 www.alsglobal.com

To: KAMINAK GOLD CORPORATION  
1020 - 800 WEST PENDER STREET  
VANCOUVER BC V6C 2V6

Page: 2 - A  
Total # Pages: 5 (A - C)  
Finalized Date: 28-AUG-2012  
Account: KAMGOL

Project: Coffee

**CERTIFICATE OF ANALYSIS WH12186475**

Sample Description	Method Analyte Units LOR	WEI-21 Recvd Wt. kg	Au-ICP21 Au ppm	ME-ICP41 Ag ppm	ME-ICP41 Al %	ME-ICP41 As ppm	ME-ICP41 B ppm	ME-ICP41 Ba ppm	ME-ICP41 Be ppm	ME-ICP41 Bi ppm	ME-ICP41 Ca %	ME-ICP41 Cd ppm	ME-ICP41 Co ppm	ME-ICP41 Cr ppm	ME-ICP41 Cu ppm	ME-ICP41 Fe %
		0.02	0.001	0.2	0.01	2	10	10	0.5	2	0.01	0.5	1	1	1	0.01
KAM091896		3.63	0.098	<0.2	1.06	25	<10	240	<0.5	<2	0.42	<0.5	8	49	6	1.59
KAM091897		2.50	0.002	<0.2	2.24	2	<10	480	<0.5	<2	2.56	<0.5	16	112	13	2.92
KAM091898		2.51	0.001	<0.2	1.92	<2	<10	320	<0.5	<2	2.39	<0.5	15	115	16	2.54
KAM091899		2.22	0.001	<0.2	2.16	3	<10	380	<0.5	<2	1.91	<0.5	15	68	20	3.07
KAM091900		0.05	0.002	0.2	1.63	3	<10	80	<0.5	<2	0.91	<0.5	9	30	22	2.50
KAM091901		2.38	0.002	0.2	2.31	4	<10	480	<0.5	<2	1.30	<0.5	16	83	21	3.01
KAM091902		2.31	0.005	0.7	1.81	4	<10	160	<0.5	2	1.39	<0.5	16	51	44	2.67
KAM091903		2.38	0.003	<0.2	2.11	2	<10	450	<0.5	<2	0.90	<0.5	14	42	16	2.81
KAM091904		2.26	0.003	<0.2	2.01	7	<10	450	<0.5	<2	1.15	<0.5	12	50	6	2.62
KAM091905		0.82	0.004	<0.2	2.92	18	<10	230	0.8	<2	3.63	<0.5	30	476	1	2.89
KAM091906		2.10	0.003	<0.2	1.13	17	<10	170	<0.5	<2	0.38	<0.5	10	140	5	1.34
KAM091907		1.64	0.009	<0.2	1.91	61	<10	300	0.8	<2	0.66	1.1	16	83	12	2.66
KAM091908		1.81	0.018	0.2	2.23	85	<10	400	1.0	<2	5.18	1.0	17	65	22	3.74
KAM091909		0.96	0.014	<0.2	3.09	79	<10	240	1.1	<2	8.5	0.6	28	408	17	3.99
KAM091910		0.06	0.971	1.3	1.60	11	<10	140	<0.5	<2	0.98	2.0	9	29	354	3.12
KAM091911		0.97	0.019	<0.2	2.46	67	<10	220	0.9	<2	9.5	0.9	22	387	8	3.57
KAM091912		0.99	0.009	0.2	2.58	39	<10	330	0.9	<2	7.07	0.8	20	594	8	3.29
KAM091913		1.97	0.013	<0.2	2.62	21	<10	600	0.8	<2	2.77	0.8	14	98	18	3.48
KAM091914		1.84	0.006	<0.2	1.44	14	<10	200	0.6	<2	1.01	0.9	9	32	4	1.86
KAM091915		2.15	0.003	<0.2	1.17	9	<10	190	0.5	<2	1.10	1.1	7	25	1	1.21
KAM091916		2.42	0.005	0.2	1.91	10	<10	270	0.8	<2	1.97	0.9	12	154	7	2.33
KAM091917		2.11	0.005	<0.2	1.58	6	<10	190	0.5	<2	2.31	0.9	10	94	6	1.68
KAM091918		1.58	0.011	<0.2	2.23	19	<10	300	0.6	<2	2.68	1.0	15	211	4	2.39
KAM091919		2.39	0.004	<0.2	1.50	8	<10	310	<0.5	<2	2.24	1.0	11	197	2	1.58
KAM091920		0.06	0.002	0.3	1.56	5	<10	100	<0.5	<2	0.81	1.1	9	28	23	2.36
KAM091921		2.54	0.002	<0.2	1.47	6	<10	500	<0.5	<2	1.33	1.1	18	133	9	1.70
KAM091922		2.32	0.003	<0.2	1.73	2	<10	690	<0.5	<2	1.83	0.9	16	85	15	2.27
KAM091923		1.16	0.002	0.2	1.54	7	<10	1270	0.5	<2	2.88	1.0	13	87	6	1.84
KAM091924		1.10	0.006	0.2	1.63	172	<10	2310	1.5	<2	4.69	0.8	18	198	6	2.14
KAM091925		1.09	0.014	0.3	1.25	206	<10	1100	1.8	<2	6.08	0.9	20	161	2	1.97
KAM091926		1.11	0.005	<0.2	0.80	98	<10	430	0.9	<2	2.61	1.0	9	61	3	1.72
KAM091927		1.18	0.027	0.3	0.97	50	<10	210	1.5	<2	7.2	1.0	17	161	9	2.56
KAM091928		1.33	0.003	0.4	0.66	211	<10	100	1.2	<2	15.6	1.0	15	101	4	2.88
KAM091929		1.25	0.009	0.4	0.59	163	<10	150	1.3	<2	11.2	1.2	14	152	4	3.16
KAM091930		0.06	0.266	0.5	0.41	456	10	720	<0.5	<2	1.05	1.2	3	41	39	3.93
KAM091931		1.21	0.019	0.4	0.69	74	<10	330	1.6	<2	10.8	1.0	20	294	6	3.35
KAM091932		0.98	0.005	0.3	0.91	55	<10	150	2.1	<2	8.9	1.1	22	369	8	4.02
KAM091933		0.81	0.017	0.4	1.30	88	<10	670	1.7	<2	6.41	1.2	22	284	15	2.63
KAM091934		1.08	0.027	0.2	1.15	61	<10	710	1.4	<2	3.13	1.0	10	58	1	2.14
KAM091935		1.13	0.012	0.2	1.44	128	10	400	1.5	<2	4.47	1.2	11	64	1	2.05



ALS Canada Ltd.  
2103 Dollarton Hwy  
North Vancouver BC V7H 0A7  
Phone: 604 984 0221 Fax: 604 984 0218 www.alsglobal.com

To: KAMINAK GOLD CORPORATION  
1020 - 800 WEST PENDER STREET  
VANCOUVER BC V6C 2V6

Page: 2 - B  
Total # Pages: 5 (A - C)  
Finalized Date: 28-AUG-2012  
Account: KAMGOL

Project: Coffee

**CERTIFICATE OF ANALYSIS WH12186475**

Sample Description	Method Analyte Units LOR	ME-ICP41 Ga ppm 10	ME-ICP41 Hg ppm 1	ME-ICP41 K % 0.01	ME-ICP41 La ppm 10	ME-ICP41 Mg % 0.01	ME-ICP41 Mn ppm 5	ME-ICP41 Mo ppm 1	ME-ICP41 Na % 0.01	ME-ICP41 Ni ppm 1	ME-ICP41 P ppm 10	ME-ICP41 Pb ppm 2	ME-ICP41 S % 0.01	ME-ICP41 Sb ppm 2	ME-ICP41 Sc ppm 1	ME-ICP41 Sr ppm 1
KAM091896		<10	<1	0.62	20	0.70	406	<1	0.04	14	630	11	0.02	2	2	56
KAM091897		10	<1	1.36	10	1.79	632	<1	0.06	33	720	5	0.02	<2	3	33
KAM091898		10	<1	0.99	10	1.71	515	<1	0.05	37	620	6	0.01	<2	3	32
KAM091899		10	<1	1.03	10	1.52	513	<1	0.07	38	610	4	0.02	<2	3	36
KAM091900		10	<1	0.12	<10	0.76	393	2	0.08	20	600	<2	0.06	<2	5	42
KAM091901		10	<1	1.10	10	1.82	550	1	0.08	28	660	20	0.08	<2	4	24
KAM091902		<10	<1	0.39	<10	1.47	478	1	0.13	20	790	61	0.02	<2	6	28
KAM091903		10	<1	0.94	10	1.67	424	<1	0.08	19	840	2	0.03	<2	4	24
KAM091904		10	<1	1.08	20	1.56	523	1	0.08	18	710	4	0.05	<2	5	23
KAM091905		10	<1	0.91	20	3.95	648	<1	0.02	442	370	5	0.02	<2	5	29
KAM091906		<10	<1	0.47	40	1.13	213	<1	0.05	108	250	6	0.01	<2	1	16
KAM091907		10	<1	0.94	20	1.61	570	<1	0.05	84	780	15	0.01	2	9	14
KAM091908		10	<1	1.46	30	1.39	876	<1	0.04	73	1000	16	0.01	<2	13	24
KAM091909		10	<1	1.20	30	3.10	876	<1	0.03	406	530	24	0.01	2	11	34
KAM091910		10	<1	0.21	10	0.75	474	9	0.12	26	650	273	0.12	2	5	54
KAM091911		10	<1	0.83	30	2.47	829	<1	0.04	333	450	27	0.01	2	9	28
KAM091912		10	<1	1.38	20	2.40	770	<1	0.04	282	400	16	0.01	<2	9	39
KAM091913		10	<1	1.70	30	1.79	715	<1	0.05	63	610	17	0.02	3	10	28
KAM091914		<10	<1	1.00	20	0.95	377	<1	0.05	19	410	6	0.01	<2	4	17
KAM091915		<10	<1	0.77	40	0.78	264	<1	0.05	15	310	6	0.01	<2	3	30
KAM091916		10	<1	1.29	10	1.66	491	<1	0.07	21	550	6	0.01	<2	4	46
KAM091917		<10	<1	0.98	<10	1.41	349	<1	0.06	29	740	7	0.01	<2	2	59
KAM091918		10	<1	1.60	10	2.29	644	<1	0.06	43	540	11	0.01	<2	3	47
KAM091919		<10	<1	1.07	10	1.44	379	<1	0.07	29	300	10	0.01	<2	2	31
KAM091920		10	<1	0.13	<10	0.72	373	1	0.09	19	590	2	0.05	<2	5	41
KAM091921		<10	<1	0.93	10	1.34	274	<1	0.07	37	510	3	0.03	<2	2	38
KAM091922		10	<1	0.94	10	1.54	405	<1	0.07	43	740	6	0.02	<2	3	61
KAM091923		10	<1	0.82	10	1.43	360	<1	0.07	38	600	24	0.04	<2	4	82
KAM091924		10	<1	1.03	20	1.33	419	<1	0.07	76	340	8	0.08	3	8	142
KAM091925		<10	1	0.75	20	1.06	594	<1	0.05	39	290	7	0.06	2	10	145
KAM091926		<10	<1	0.15	40	0.21	266	<1	0.03	16	330	5	0.02	<2	6	31
KAM091927		<10	<1	0.25	30	1.40	783	<1	0.03	22	530	19	0.20	3	14	92
KAM091928		<10	<1	0.18	10	2.63	1340	<1	0.03	42	190	14	0.09	<2	11	252
KAM091929		<10	<1	0.20	10	4.20	870	<1	0.04	31	170	15	0.15	2	12	212
KAM091930		<10	4	0.10	10	0.03	74	13	0.05	15	150	15	0.23	29	1	84
KAM091931		<10	1	0.16	20	1.73	1000	<1	0.03	51	380	21	0.17	2	18	131
KAM091932		<10	<1	0.13	30	1.44	899	<1	0.04	62	720	46	0.43	3	21	114
KAM091933		<10	<1	0.38	30	0.56	727	<1	0.04	84	400	157	0.05	2	14	118
KAM091934		<10	<1	0.45	30	1.14	467	1	0.04	13	490	16	0.39	<2	8	94
KAM091935		<10	<1	0.42	30	0.58	555	<1	0.03	19	320	12	0.10	<2	7	54



ALS Canada Ltd.  
2103 Dollarton Hwy  
North Vancouver BC V7H 0A7  
Phone: 604 984 0221 Fax: 604 984 0218 www.alsglobal.com

To: KAMINAK GOLD CORPORATION  
1020 - 800 WEST PENDER STREET  
VANCOUVER BC V6C 2V6

Page: 2 - C  
Total # Pages: 5 (A - C)  
Finalized Date: 28-AUG-2012  
Account: KAMGOL

Project: Coffee

**CERTIFICATE OF ANALYSIS WH12186475**

Sample Description	Method Analyte Units LOR	ME-ICP41	ME-ICP41	ME-ICP41	ME-ICP41	ME-ICP41	ME-ICP41	ME-ICP41
		Th	Ti	Ti	U	V	W	Zn
		ppm 20	% 0.01	ppm 10	ppm 10	ppm 1	ppm 10	ppm 2
KAM091896		<20	0.12	<10	<10	31	<10	36
KAM091897		<20	0.25	<10	<10	56	<10	66
KAM091898		<20	0.21	<10	<10	47	<10	45
KAM091899		<20	0.24	<10	<10	50	<10	43
KAM091900		<20	0.14	<10	<10	61	20	46
KAM091901		<20	0.18	<10	<10	52	<10	76
KAM091902		<20	0.20	<10	<10	59	<10	82
KAM091903		<20	0.20	<10	<10	55	<10	48
KAM091904		<20	0.19	<10	<10	50	<10	55
KAM091905		<20	0.16	<10	<10	36	<10	59
KAM091906		20	0.07	<10	<10	14	<10	25
KAM091907		20	0.12	<10	<10	53	<10	45
KAM091908		<20	0.12	<10	<10	96	<10	63
KAM091909		<20	0.10	<10	<10	65	<10	75
KAM091910		<20	0.15	<10	<10	65	10	207
KAM091911		<20	0.08	<10	<10	65	<10	55
KAM091912		<20	0.12	<10	<10	64	<10	49
KAM091913		<20	0.17	<10	<10	55	<10	104
KAM091914		20	0.11	<10	<10	28	<10	27
KAM091915		30	0.08	<10	<10	16	<10	16
KAM091916		20	0.16	<10	<10	51	<10	48
KAM091917		<20	0.22	<10	<10	37	<10	29
KAM091918		<20	0.23	<10	<10	49	<10	59
KAM091919		20	0.15	<10	<10	34	<10	30
KAM091920		<20	0.14	<10	<10	58	10	41
KAM091921		<20	0.22	<10	<10	38	<10	22
KAM091922		<20	0.23	<10	<10	43	<10	31
KAM091923		<20	0.18	<10	<10	40	<10	60
KAM091924		20	0.11	<10	<10	46	<10	38
KAM091925		20	0.06	<10	<10	46	<10	33
KAM091926		30	0.02	<10	<10	25	<10	28
KAM091927		20	0.03	<10	<10	71	<10	59
KAM091928		<20	0.01	<10	<10	35	<10	75
KAM091929		<20	0.02	<10	<10	44	<10	64
KAM091930		<20	0.02	10	<10	28	10	23
KAM091931		<20	0.02	<10	<10	79	<10	113
KAM091932		<20	0.02	<10	<10	113	<10	131
KAM091933		20	0.03	<10	<10	64	<10	61
KAM091934		20	0.03	<10	<10	39	<10	50
KAM091935		20	0.03	<10	<10	29	<10	65



ALS Canada Ltd.  
2103 Dollarton Hwy  
North Vancouver BC V7H 0A7  
Phone: 604 984 0221 Fax: 604 984 0218 www.alsglobal.com

To: KAMINAK GOLD CORPORATION  
1020 - 800 WEST PENDER STREET  
VANCOUVER BC V6C 2V6

Page: 3 - A  
Total # Pages: 5 (A - C)  
Finalized Date: 28-AUG-2012  
Account: KAMGOL

Project: Coffee

**CERTIFICATE OF ANALYSIS WH12186475**

Sample Description	Method Analyte Units LOR	WEI-21 Recvd Wt. kg	Au-ICP21 Au ppm	ME-ICP41 Ag ppm	ME-ICP41 Al %	ME-ICP41 As ppm	ME-ICP41 B ppm	ME-ICP41 Ba ppm	ME-ICP41 Be ppm	ME-ICP41 Bi ppm	ME-ICP41 Ca %	ME-ICP41 Cd ppm	ME-ICP41 Co ppm	ME-ICP41 Cr ppm	ME-ICP41 Cu ppm	ME-ICP41 Fe %
		0.02	0.001	0.2	0.01	2	10	10	0.5	2	0.01	0.5	1	1	1	0.01
KAM091936		1.16	0.003	<0.2	0.68	53	<10	150	0.8	<2	2.14	1.0	4	7	1	0.99
KAM091937		1.12	0.004	<0.2	1.88	101	<10	530	2.6	<2	4.19	0.7	25	131	5	4.95
KAM091938		1.21	0.002	0.2	2.12	11	<10	520	0.9	<2	4.09	0.8	18	73	13	2.66
KAM091939		1.24	0.002	0.2	2.32	26	<10	980	1.3	<2	3.34	0.9	18	53	10	3.16
KAM091940		0.06	0.002	0.2	1.62	5	<10	100	<0.5	<2	0.85	1.2	8	29	23	2.46
KAM091941		1.11	0.002	0.2	2.35	95	<10	530	1.6	<2	5.03	0.9	24	62	11	3.37
KAM091942		1.15	0.004	0.2	0.81	798	<10	1470	1.1	<2	2.95	1.1	8	21	22	1.67
KAM091943		1.10	0.008	<0.2	0.76	1830	10	730	1.0	<2	2.01	<0.5	11	25	3	1.83
KAM091944		1.17	0.005	<0.2	0.73	2050	<10	3960	1.1	<2	3.54	<0.5	11	27	3	2.39
KAM091945		1.12	0.004	<0.2	0.67	198	<10	2040	0.8	2	3.35	<0.5	5	14	<1	1.27
KAM091946		1.13	0.005	<0.2	0.51	305	<10	890	0.6	<2	2.90	<0.5	4	9	1	0.99
KAM091947		1.11	0.019	0.3	1.14	492	<10	630	1.4	3	7.1	0.5	15	116	20	3.37
KAM091948		1.28	0.003	<0.2	1.79	543	<10	510	1.8	2	6.00	<0.5	18	175	11	3.77
KAM091949		2.53	0.002	<0.2	2.41	97	<10	1080	1.9	<2	4.89	<0.5	16	215	3	3.11
KAM091950		0.06	1.990	0.4	1.83	8	<10	100	<0.5	<2	1.01	<0.5	11	32	32	2.99
KAM091951		2.55	0.005	<0.2	2.40	11	<10	440	0.7	<2	4.17	<0.5	16	195	8	2.93
KAM091952		2.35	0.002	<0.2	1.45	6	<10	150	<0.5	<2	3.57	<0.5	13	137	7	1.97
KAM091953		2.18	0.006	<0.2	2.21	18	<10	240	0.5	<2	3.08	<0.5	19	182	9	2.74
KAM091954		2.30	0.007	<0.2	2.14	19	<10	300	0.5	<2	3.14	<0.5	15	105	4	2.46
KAM091955		2.50	0.005	<0.2	1.51	12	<10	170	<0.5	2	2.33	<0.5	16	80	7	1.90
KAM091956		2.41	0.003	<0.2	1.56	<2	<10	310	<0.5	2	2.33	<0.5	16	87	6	2.23
KAM091957		2.35	0.002	<0.2	2.01	<2	<10	470	0.5	<2	3.28	<0.5	15	197	2	2.28
KAM091958		2.46	0.003	<0.2	1.25	11	<10	180	<0.5	<2	1.70	<0.5	9	124	5	1.36
KAM091959		2.49	0.008	<0.2	1.85	6	<10	530	0.5	<2	2.44	<0.5	15	99	1	2.46
KAM091960		0.06	0.003	0.5	1.66	2	<10	80	<0.5	<2	0.93	<0.5	9	30	23	2.54
KAM091961		1.24	0.014	<0.2	2.31	67	<10	730	0.7	2	4.57	<0.5	14	79	1	3.28
KAM091962		0.84	0.096	<0.2	2.70	111	<10	930	1.1	<2	1.76	<0.5	25	55	154	4.17
KAM091963		0.95	0.027	<0.2	1.05	174	<10	180	0.8	<2	1.20	<0.5	9	35	7	1.73
KAM091964		1.31	0.033	<0.2	1.60	1080	<10	190	1.4	<2	3.29	<0.5	18	49	9	2.90
KAM091965		0.74	1.030	<0.2	0.76	>10000	10	100	1.6	2	3.25	<0.5	23	30	5	4.13
KAM091966		0.64	7.72	0.2	0.68	9700	10	340	1.7	2	6.83	<0.5	19	23	6	4.23
KAM091967		0.66	5.31	<0.2	0.66	>10000	10	140	1.4	<2	2.04	<0.5	20	22	6	3.77
KAM091968		0.85	8.63	0.2	0.74	>10000	10	90	1.5	3	4.30	<0.5	24	33	18	3.75
KAM091969		1.28	2.69	<0.2	1.63	4040	10	490	2.7	<2	5.33	<0.5	31	102	6	4.87
KAM091970		0.06	0.877	1.1	1.69	36	<10	120	<0.5	2	1.09	1.1	9	30	350	3.34
KAM091971		1.17	0.030	<0.2	1.98	59	<10	740	0.8	2	3.86	<0.5	17	131	9	2.70
KAM091972		2.60	0.015	<0.2	1.90	40	<10	220	0.7	<2	3.13	<0.5	17	102	4	2.76
KAM091973		2.64	0.006	<0.2	1.88	8	<10	190	0.5	<2	3.96	<0.5	15	91	11	2.58
KAM091974		2.68	0.003	<0.2	2.42	9	<10	580	0.7	<2	4.10	<0.5	20	129	8	3.41
KAM091975		2.33	0.005	<0.2	1.34	18	<10	660	0.7	2	1.49	<0.5	12	49	5	2.25



ALS Canada Ltd.  
2103 Dollarton Hwy  
North Vancouver BC V7H 0A7  
Phone: 604 984 0221 Fax: 604 984 0218 www.alsglobal.com

To: KAMINAK GOLD CORPORATION  
1020 - 800 WEST PENDER STREET  
VANCOUVER BC V6C 2V6

Page: 3 - B  
Total # Pages: 5 (A - C)  
Finalized Date: 28-AUG-2012  
Account: KAMGOL

Project: Coffee

**CERTIFICATE OF ANALYSIS WH12186475**

Sample Description	Method Analyte Units LOR	ME-ICP41 Ga ppm 10	ME-ICP41 Hg ppm 1	ME-ICP41 K % 0.01	ME-ICP41 La ppm 10	ME-ICP41 Mg % 0.01	ME-ICP41 Mn ppm 5	ME-ICP41 Mo ppm 1	ME-ICP41 Na % 0.01	ME-ICP41 Ni ppm 1	ME-ICP41 P ppm 10	ME-ICP41 Pb ppm 2	ME-ICP41 S % 0.01	ME-ICP41 Sb ppm 2	ME-ICP41 Sc ppm 1	ME-ICP41 Sr ppm 1
KAM091936		<10	<1	0.12	40	0.09	184	<1	0.03	4	190	8	0.02	<2	2	20
KAM091937		10	<1	0.96	30	0.99	1045	1	0.03	46	540	13	0.05	3	13	42
KAM091938		10	<1	1.15	10	1.98	646	<1	0.06	32	780	7	0.31	<2	7	117
KAM091939		10	<1	1.24	10	1.95	615	<1	0.07	19	700	26	0.27	2	8	120
KAM091940		10	<1	0.13	<10	0.75	390	1	0.10	21	620	2	0.05	<2	5	43
KAM091941		10	<1	1.41	20	2.12	663	<1	0.05	18	570	19	0.35	2	11	171
KAM091942		<10	<1	0.25	20	0.40	468	1	0.04	13	290	69	0.17	6	5	68
KAM091943		<10	2	0.16	20	0.34	319	1	<0.01	20	190	14	0.05	5	6	47
KAM091944		<10	2	0.15	20	0.75	545	2	<0.01	18	280	10	0.16	5	5	186
KAM091945		<10	<1	0.08	10	1.00	347	1	<0.01	7	140	11	0.28	3	2	105
KAM091946		<10	<1	0.08	20	0.10	250	1	0.02	5	110	12	0.06	2	2	36
KAM091947		<10	1	0.38	30	0.66	689	1	0.01	46	430	521	0.51	5	11	95
KAM091948		10	1	1.02	30	1.94	943	1	0.02	65	570	116	0.30	4	14	79
KAM091949		10	<1	1.68	20	2.31	784	<1	0.02	49	610	24	0.06	<2	8	223
KAM091950		10	<1	0.15	10	0.83	449	3	0.10	25	610	4	0.06	2	6	49
KAM091951		10	<1	1.61	20	2.42	813	1	0.04	49	530	38	0.14	<2	6	85
KAM091952		<10	<1	0.62	10	1.52	561	<1	0.06	37	490	36	0.22	<2	4	57
KAM091953		10	<1	1.10	10	2.27	728	1	0.05	47	640	37	0.03	<2	7	53
KAM091954		10	<1	1.06	10	2.10	683	<1	0.05	35	690	12	0.03	<2	5	61
KAM091955		<10	<1	0.62	10	1.46	397	<1	0.08	30	710	13	0.11	<2	3	43
KAM091956		<10	<1	0.58	10	1.47	410	1	0.08	33	650	2	0.06	<2	4	38
KAM091957		10	<1	1.26	10	1.98	548	<1	0.06	46	650	2	0.03	<2	4	51
KAM091958		<10	<1	0.74	20	1.05	244	<1	0.04	31	430	<2	0.02	<2	2	33
KAM091959		10	<1	0.98	10	1.76	424	<1	0.07	39	800	<2	0.03	<2	4	47
KAM091960		<10	<1	0.12	<10	0.77	399	2	0.09	21	610	<2	0.06	<2	5	43
KAM091961		10	<1	1.26	20	1.95	1065	<1	0.03	31	710	4	0.02	<2	8	70
KAM091962		10	<1	1.35	20	2.08	709	<1	0.05	20	1030	16	0.03	3	7	45
KAM091963		<10	<1	0.39	20	0.61	311	<1	0.05	18	400	12	0.01	2	4	23
KAM091964		10	1	0.64	30	0.70	455	<1	0.03	42	740	14	0.02	4	10	18
KAM091965		<10	6	0.23	30	0.20	567	2	0.01	65	700	23	0.04	14	9	37
KAM091966		<10	6	0.30	30	0.21	1400	1	0.01	74	640	13	0.04	30	6	51
KAM091967		<10	8	0.28	30	0.54	832	<1	0.01	45	720	10	0.03	16	8	64
KAM091968		<10	4	0.32	30	0.94	869	1	0.01	42	880	10	0.05	16	11	83
KAM091969		<10	2	0.57	20	0.92	1210	1	0.03	114	990	5	0.04	11	11	80
KAM091970		10	<1	0.21	10	0.79	504	9	0.11	26	670	276	0.13	4	5	55
KAM091971		10	<1	0.90	10	1.84	602	<1	0.08	77	900	<2	0.08	<2	5	67
KAM091972		10	<1	0.64	10	1.71	592	<1	0.08	71	920	<2	0.04	<2	4	54
KAM091973		10	1	0.56	10	1.90	769	<1	0.10	66	1090	<2	0.18	<2	4	76
KAM091974		10	<1	1.06	10	2.68	868	1	0.08	84	1000	<2	0.49	<2	7	76
KAM091975		<10	<1	0.79	50	1.09	352	15	0.05	22	470	2	0.09	<2	3	28



ALS Canada Ltd.  
 2103 Dollarton Hwy  
 North Vancouver BC V7H 0A7  
 Phone: 604 984 0221 Fax: 604 984 0218 www.alsglobal.com

To: KAMINAK GOLD CORPORATION  
 1020 - 800 WEST PENDER STREET  
 VANCOUVER BC V6C 2V6

Page: 3 - C  
 Total # Pages: 5 (A - C)  
 Finalized Date: 28-AUG-2012  
 Account: KAMGOL

Project: Coffee

**CERTIFICATE OF ANALYSIS WH12186475**

Sample Description	Method Analyte Units LOR	ME-ICP41	ME-ICP41	ME-ICP41	ME-ICP41	ME-ICP41	ME-ICP41
		Th	Ti	Ti	U	V	Zn
		ppm	%	ppm	ppm	ppm	ppm
		20	0.01	10	10	1	2
KAM091936		30	0.01	<10	<10	6	<10
KAM091937		20	0.07	<10	<10	68	<10
KAM091938		<20	0.21	<10	<10	54	<10
KAM091939		<20	0.20	<10	<10	59	<10
KAM091940		<20	0.15	<10	<10	60	10
KAM091941		<20	0.13	<10	<10	80	<10
KAM091942		20	0.02	<10	<10	24	<10
KAM091943		20	<0.01	<10	<10	16	<10
KAM091944		20	<0.01	<10	<10	18	<10
KAM091945		30	<0.01	<10	10	9	<10
KAM091946		30	<0.01	<10	10	8	<10
KAM091947		<20	0.02	<10	<10	55	<10
KAM091948		<20	0.08	<10	<10	76	<10
KAM091949		<20	0.18	<10	<10	79	<10
KAM091950		<20	0.16	<10	<10	71	20
KAM091951		<20	0.18	<10	<10	59	<10
KAM091952		<20	0.14	<10	<10	41	<10
KAM091953		<20	0.19	<10	<10	66	<10
KAM091954		<20	0.16	<10	<10	59	<10
KAM091955		<20	0.16	<10	<10	37	<10
KAM091956		<20	0.16	<10	<10	43	<10
KAM091957		<20	0.23	<10	<10	52	<10
KAM091958		<20	0.15	<10	<10	28	<10
KAM091959		<20	0.24	<10	<10	51	<10
KAM091960		<20	0.14	<10	<10	62	10
KAM091961		<20	0.14	<10	<10	66	<10
KAM091962		<20	0.17	<10	<10	86	<10
KAM091963		20	0.03	<10	<10	30	<10
KAM091964		<20	0.06	<10	<10	60	<10
KAM091965		<20	<0.01	<10	20	24	<10
KAM091966		<20	<0.01	<10	30	18	<10
KAM091967		<20	<0.01	10	20	17	<10
KAM091968		<20	<0.01	<10	<10	22	<10
KAM091969		<20	0.02	<10	<10	41	<10
KAM091970		<20	0.15	<10	<10	69	10
KAM091971		<20	0.12	<10	<10	42	<10
KAM091972		<20	0.10	<10	<10	36	<10
KAM091973		<20	0.13	<10	<10	37	<10
KAM091974		<20	0.16	<10	<10	51	<10
KAM091975		20	0.09	<10	<10	27	<10



ALS Canada Ltd.  
2103 Dollarton Hwy  
North Vancouver BC V7H 0A7  
Phone: 604 984 0221 Fax: 604 984 0218 www.alsglobal.com

To: KAMINAK GOLD CORPORATION  
1020 - 800 WEST PENDER STREET  
VANCOUVER BC V6C 2V6

Page: 4 - A  
Total # Pages: 5 (A - C)  
Finalized Date: 28-AUG-2012  
Account: KAMGOL

Project: Coffee

**CERTIFICATE OF ANALYSIS WH12186475**

Sample Description	Method Analyte Units LOR	WEI-21 Recvd Wt. kg	Au-ICP21 Au ppm	ME-ICP41 Ag ppm	ME-ICP41 Al %	ME-ICP41 As ppm	ME-ICP41 B ppm	ME-ICP41 Ba ppm	ME-ICP41 Be ppm	ME-ICP41 Bi ppm	ME-ICP41 Ca %	ME-ICP41 Cd ppm	ME-ICP41 Co ppm	ME-ICP41 Cr ppm	ME-ICP41 Cu ppm	ME-ICP41 Fe %
		0.02	0.001	0.2	0.01	2	10	10	0.5	2	0.01	0.5	1	1	1	0.01
KAM091976		2.75	0.004	<0.2	2.32	8	<10	260	0.6	2	2.25	<0.5	20	70	18	3.37
KAM091977		2.70	0.004	<0.2	2.09	2	<10	100	0.6	3	1.86	<0.5	18	142	13	2.99
KAM091978		2.80	0.002	0.4	2.19	4	<10	150	0.8	2	3.36	<0.5	30	192	13	3.30
KAM091979		2.43	0.001	<0.2	2.19	5	<10	170	0.8	<2	3.03	<0.5	19	102	13	3.23
KAM091980		0.06	0.002	0.2	1.59	4	<10	90	<0.5	<2	0.85	<0.5	11	30	23	2.42
KAM091981		2.54	0.002	<0.2	1.08	12	<10	90	<0.5	<2	1.43	<0.5	11	47	7	1.77
KAM091982		2.88	0.001	<0.2	2.07	5	<10	300	0.7	<2	2.88	<0.5	20	141	20	3.07
KAM091983		2.58	0.004	<0.2	1.92	<2	<10	320	0.5	<2	2.71	<0.5	18	112	9	2.60
KAM091984		2.72	0.001	<0.2	1.67	5	<10	160	0.6	<2	3.01	<0.5	20	130	30	2.61
KAM091985		2.57	0.002	<0.2	2.04	13	<10	190	0.9	<2	2.76	<0.5	20	157	13	3.18
KAM091986		2.41	<0.001	<0.2	1.11	9	<10	180	<0.5	<2	1.73	<0.5	9	26	10	1.77
KAM091987		2.59	0.003	<0.2	2.15	5	<10	300	0.6	<2	2.37	<0.5	16	61	13	3.06
KAM091988		2.40	0.008	<0.2	1.32	18	<10	240	0.5	<2	2.28	<0.5	11	36	12	2.07
KAM091989		2.54	0.002	<0.2	2.28	16	<10	320	0.8	<2	2.36	<0.5	18	65	14	3.24
KAM091990		0.06	9.02	1.4	1.18	20	<10	40	<0.5	<2	0.70	<0.5	13	30	54	3.35
KAM091991		2.50	0.004	<0.2	1.68	42	<10	260	0.7	<2	1.70	<0.5	11	47	9	2.41
KAM091992		2.49	0.002	<0.2	0.55	35	<10	40	0.5	<2	1.51	<0.5	8	6	6	1.49
KAM091993		2.47	0.001	<0.2	0.75	9	<10	80	0.5	<2	1.14	<0.5	9	8	6	1.52
KAM091994		2.74	0.001	<0.2	2.08	<2	<10	250	0.6	<2	3.82	<0.5	18	126	10	2.90
KAM091995		2.52	<0.001	<0.2	1.89	11	<10	190	0.9	<2	3.96	<0.5	16	152	5	2.85
KAM091996		2.33	0.003	<0.2	0.95	18	<10	60	0.6	<2	0.83	<0.5	7	28	17	1.96
KAM091997		2.58	0.002	<0.2	0.79	9	<10	60	0.5	<2	0.65	<0.5	6	7	5	1.70
KAM091998		2.47	0.003	<0.2	0.75	20	<10	40	0.6	<2	1.50	<0.5	7	7	10	1.72
KAM091999		2.42	0.013	<0.2	0.58	28	<10	40	0.6	2	1.23	<0.5	7	4	13	1.59
KAM092000		0.06	0.002	0.3	1.62	3	<10	90	<0.5	<2	0.87	<0.5	11	30	23	2.47
KAM092001		2.22	0.008	<0.2	0.72	157	<10	50	0.8	2	3.32	<0.5	8	11	4	2.29
KAM092002		2.34	0.019	<0.2	0.71	30	<10	40	0.7	<2	4.87	<0.5	6	4	8	1.57
KAM092003		2.27	0.003	<0.2	0.77	13	<10	20	0.7	2	2.23	<0.5	7	3	4	1.69
KAM092004		2.30	0.002	<0.2	0.74	10	<10	30	0.6	2	1.62	<0.5	7	3	4	1.24
KAM092005		2.40	0.005	<0.2	0.79	14	<10	30	0.7	<2	1.70	<0.5	6	3	6	1.73
KAM092006		2.35	0.001	<0.2	1.31	12	<10	90	0.6	2	1.60	<0.5	10	14	8	2.03
KAM092007		2.45	0.001	<0.2	0.85	12	<10	50	0.5	<2	2.53	<0.5	9	5	11	1.74
KAM092008		2.52	0.010	0.3	0.55	14	<10	40	0.6	<2	0.86	<0.5	8	6	40	1.77
KAM092009		2.50	0.003	<0.2	1.68	11	<10	160	1.1	<2	2.20	<0.5	13	83	21	2.65
KAM092010		0.06	5.73	1.1	1.53	37	<10	90	<0.5	<2	0.65	<0.5	10	34	78	3.32
KAM092011		2.57	0.010	0.3	1.21	23	<10	70	1.1	<2	1.78	<0.5	14	75	8	2.09
KAM092012		2.49	0.016	<0.2	0.49	20	<10	40	0.5	<2	0.73	<0.5	7	8	16	1.48
KAM092013		2.41	0.010	0.2	0.49	26	<10	30	0.5	<2	0.91	<0.5	6	6	11	1.22
KAM092014		2.47	0.006	<0.2	0.54	37	<10	40	0.6	<2	0.92	<0.5	7	6	12	1.24
KAM092015		2.42	0.009	<0.2	1.45	33	<10	130	0.5	<2	1.38	<0.5	12	122	28	2.43





ALS Canada Ltd.  
2103 Dollarton Hwy  
North Vancouver BC V7H 0A7  
Phone: 604 984 0221 Fax: 604 984 0218 www.alsglobal.com

To: KAMINAK GOLD CORPORATION  
1020 - 800 WEST PENDER STREET  
VANCOUVER BC V6C 2V6

Page: 4 - B  
Total # Pages: 5 (A - C)  
Finalized Date: 28-AUG-2012  
Account: KAMGOL

Project: Coffee

**CERTIFICATE OF ANALYSIS WH12186475**

Sample Description	Method Analyte Units LOR	ME-ICP41 Ga ppm 10	ME-ICP41 Hg ppm 1	ME-ICP41 K % 0.01	ME-ICP41 La ppm 10	ME-ICP41 Mg % 0.01	ME-ICP41 Mn ppm 5	ME-ICP41 Mo ppm 1	ME-ICP41 Na % 0.01	ME-ICP41 Ni ppm 1	ME-ICP41 P ppm 10	ME-ICP41 Pb ppm 2	ME-ICP41 S % 0.01	ME-ICP41 Sb ppm 2	ME-ICP41 Sc ppm 1	ME-ICP41 Sr ppm 1
KAM091976		10	<1	1.22	30	2.18	598	6	0.06	35	730	2	0.36	<2	10	55
KAM091977		10	<1	1.01	10	2.11	543	1	0.08	54	590	2	0.21	<2	8	37
KAM091978		10	<1	1.01	10	2.32	686	1	0.10	346	800	2	0.33	<2	6	78
KAM091979		10	<1	1.30	10	2.08	704	1	0.04	45	710	4	0.06	<2	8	86
KAM091980		<10	<1	0.12	<10	0.75	392	2	0.08	21	580	2	0.05	<2	5	41
KAM091981		<10	<1	0.49	30	0.92	323	1	0.06	22	380	4	0.02	<2	3	38
KAM091982		10	<1	1.03	10	2.32	537	<1	0.06	60	980	3	0.47	<2	7	81
KAM091983		10	<1	0.96	10	2.06	479	1	0.05	51	920	<2	0.23	<2	5	81
KAM091984		10	<1	0.90	10	1.90	439	<1	0.05	49	810	2	0.66	<2	5	73
KAM091985		10	<1	1.43	20	2.16	605	1	0.04	134	660	8	0.25	<2	7	68
KAM091986		<10	<1	0.72	50	0.80	412	1	0.04	10	420	9	0.16	<2	3	34
KAM091987		10	<1	1.64	30	1.81	553	3	0.03	29	640	6	0.33	<2	6	58
KAM091988		<10	<1	0.84	20	1.26	502	2	0.05	16	560	7	0.13	<2	3	58
KAM091989		10	<1	1.56	30	1.80	520	1	0.03	31	670	4	0.44	<2	7	79
KAM091990		<10	3	0.19	10	0.60	365	849	0.08	26	420	8	1.39	26	4	55
KAM091991		<10	<1	1.06	40	1.30	338	2	0.04	24	470	3	0.20	<2	5	47
KAM091992		<10	<1	0.30	30	0.53	228	3	0.04	3	260	4	0.12	<2	1	43
KAM091993		<10	<1	0.40	30	0.43	253	1	0.06	4	240	2	0.02	<2	2	26
KAM091994		10	<1	0.92	10	2.03	701	2	0.07	47	650	<2	0.20	<2	6	74
KAM091995		10	<1	0.99	20	2.06	676	1	0.05	51	550	2	0.06	<2	6	109
KAM091996		<10	<1	0.57	50	0.43	239	1	0.03	9	350	4	0.03	<2	2	17
KAM091997		<10	<1	0.53	60	0.38	244	1	0.03	2	340	3	0.05	<2	2	26
KAM091998		<10	<1	0.26	60	0.24	191	1	0.02	2	480	5	0.05	<2	3	35
KAM091999		<10	<1	0.15	60	0.07	188	2	0.01	2	390	5	0.02	<2	3	20
KAM092000		<10	<1	0.12	<10	0.77	399	2	0.08	21	590	2	0.06	<2	5	42
KAM092001		<10	<1	0.15	50	0.13	408	<1	0.01	9	370	6	0.01	2	3	25
KAM092002		<10	<1	0.10	40	0.09	301	1	0.01	1	350	24	0.02	<2	2	46
KAM092003		<10	<1	0.07	50	0.40	204	2	0.01	2	330	7	0.04	<2	4	38
KAM092004		<10	<1	0.12	50	0.33	157	2	0.01	<1	300	7	0.02	<2	2	36
KAM092005		<10	<1	0.14	60	0.46	231	2	0.01	1	310	6	0.14	<2	2	44
KAM092006		<10	<1	0.61	50	0.79	343	<1	0.03	5	390	4	0.12	<2	3	38
KAM092007		<10	<1	0.36	60	0.37	296	2	0.03	15	330	14	0.10	<2	2	242
KAM092008		<10	<1	0.25	50	0.27	214	4	0.04	5	270	279	0.65	<2	2	32
KAM092009		<10	<1	0.96	30	1.17	433	5	0.03	31	390	64	0.13	<2	6	66
KAM092010		<10	2	0.14	10	0.66	507	574	0.07	26	520	79	0.76	16	4	45
KAM092011		<10	<1	0.66	30	1.02	313	2	0.03	23	190	20	0.09	<2	5	69
KAM092012		<10	<1	0.18	40	0.19	171	1	0.04	1	240	16	0.02	<2	1	23
KAM092013		<10	<1	0.21	40	0.13	134	1	0.04	2	260	81	0.02	<2	1	17
KAM092014		<10	<1	0.24	40	0.17	124	1	0.05	2	240	18	0.02	<2	1	15
KAM092015		<10	<1	0.69	20	1.29	266	1	0.06	53	490	27	0.02	<2	4	25



ALS Canada Ltd.  
 2103 Dollarton Hwy  
 North Vancouver BC V7H 0A7  
 Phone: 604 984 0221 Fax: 604 984 0218 www.alsglobal.com

To: KAMINAK GOLD CORPORATION  
 1020 - 800 WEST PENDER STREET  
 VANCOUVER BC V6C 2V6

Page: 4 - C  
 Total # Pages: 5 (A - C)  
 Finalized Date: 28-AUG-2012  
 Account: KAMGOL

Project: Coffee

**CERTIFICATE OF ANALYSIS WH12186475**

Sample Description	Method Analyte Units LOR	ME-ICP41	ME-ICP41	ME-ICP41	ME-ICP41	ME-ICP41	ME-ICP41
		Th	Ti	Ti	U	V	Zn
		ppm	%	ppm	ppm	ppm	ppm
		20	0.01	10	10	1	2
KAM091976		<20	0.15	<10	<10	78	<10
KAM091977		<20	0.13	<10	<10	49	<10
KAM091978		<20	0.16	<10	<10	51	<10
KAM091979		<20	0.14	<10	<10	62	<10
KAM091980		<20	0.14	<10	<10	61	20
KAM091981		20	0.05	<10	<10	27	<10
KAM091982		<20	0.20	<10	<10	56	<10
KAM091983		<20	0.22	<10	<10	47	<10
KAM091984		<20	0.20	<10	<10	46	<10
KAM091985		<20	0.15	<10	<10	57	<10
KAM091986		20	0.07	<10	<10	23	<10
KAM091987		<20	0.17	<10	<10	46	<10
KAM091988		20	0.09	<10	<10	26	<10
KAM091989		<20	0.14	<10	<10	61	<10
KAM091990		<20	0.09	<10	<10	56	20
KAM091991		20	0.10	<10	<10	39	<10
KAM091992		30	0.02	<10	<10	7	<10
KAM091993		30	0.05	<10	<10	11	<10
KAM091994		<20	0.16	<10	<10	51	<10
KAM091995		<20	0.13	<10	<10	46	<10
KAM091996		30	0.05	<10	<10	12	<10
KAM091997		30	0.05	<10	<10	8	<10
KAM091998		30	0.02	<10	<10	18	<10
KAM091999		30	0.01	<10	<10	18	<10
KAM092000		<20	0.14	<10	<10	62	20
KAM092001		30	<0.01	<10	<10	14	<10
KAM092002		30	<0.01	<10	<10	8	<10
KAM092003		30	<0.01	<10	<10	12	<10
KAM092004		30	<0.01	<10	<10	6	<10
KAM092005		30	<0.01	<10	<10	6	<10
KAM092006		30	0.06	<10	<10	19	<10
KAM092007		30	0.03	<10	<10	8	<10
KAM092008		30	0.02	<10	<10	7	<10
KAM092009		20	0.08	<10	<10	33	<10
KAM092010		<20	0.11	<10	<10	55	10
KAM092011		30	0.04	<10	<10	26	<10
KAM092012		30	<0.01	<10	<10	4	<10
KAM092013		30	0.01	<10	<10	5	<10
KAM092014		30	0.01	<10	<10	5	<10
KAM092015		20	0.11	<10	<10	33	<10



ALS Canada Ltd.  
2103 Dollarton Hwy  
North Vancouver BC V7H 0A7  
Phone: 604 984 0221 Fax: 604 984 0218 www.alsglobal.com

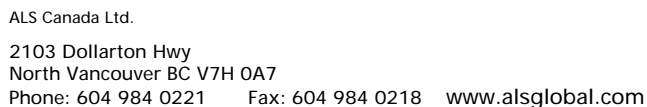
To: KAMINAK GOLD CORPORATION  
1020 - 800 WEST PENDER STREET  
VANCOUVER BC V6C 2V6

Page: 5 - A  
Total # Pages: 5 (A - C)  
Finalized Date: 28-AUG-2012  
Account: KAMGOL

Project: Coffee

**CERTIFICATE OF ANALYSIS WH12186475**

Sample Description	Method Analyte Units LOR	WEI-21 Recvd Wt. kg	Au-ICP21 Au ppm	ME-ICP41 Ag ppm	ME-ICP41 Al %	ME-ICP41 As ppm	ME-ICP41 B ppm	ME-ICP41 Ba ppm	ME-ICP41 Be ppm	ME-ICP41 Bi ppm	ME-ICP41 Ca %	ME-ICP41 Cd ppm	ME-ICP41 Co ppm	ME-ICP41 Cr ppm	ME-ICP41 Cu ppm	ME-ICP41 Fe %
		0.02	0.001	0.2	0.01	2	10	10	0.5	2	0.01	0.5	1	1	1	0.01
KAM092016		2.58	0.002	<0.2	2.04	20	<10	280	0.5	<2	5.15	<0.5	24	269	23	2.84
KAM092017		2.47	0.002	<0.2	2.07	30	<10	220	<0.5	<2	4.03	<0.5	27	287	48	3.12
KAM092018		2.67	0.002	<0.2	2.38	21	<10	240	0.5	<2	3.27	<0.5	17	317	9	2.66
KAM092019		2.65	0.002	<0.2	2.80	7	<10	280	0.7	5	3.16	<0.5	21	273	5	3.40
KAM092020		0.06	0.001	0.2	1.65	3	<10	110	<0.5	<2	0.87	<0.5	9	31	24	2.55
KAM092021		2.54	0.004	<0.2	2.47	<2	<10	240	0.6	<2	2.76	<0.5	17	88	4	3.07
KAM092022		2.29	0.010	<0.2	1.11	9	<10	100	<0.5	<2	0.74	<0.5	8	35	15	1.53
KAM092023		2.25	0.008	<0.2	0.49	17	<10	60	<0.5	<2	0.10	<0.5	5	7	6	0.94
KAM092024		2.70	0.005	<0.2	0.95	7	<10	90	<0.5	<2	0.58	<0.5	7	29	4	1.40
KAM092025		2.67	<0.001	<0.2	2.59	4	<10	180	0.8	<2	3.83	<0.5	17	171	5	3.23
KAM092026		2.78	0.001	<0.2	2.35	4	<10	290	0.5	<2	4.14	<0.5	17	155	6	2.85
KAM092027		2.56	0.002	<0.2	2.67	2	<10	200	0.8	<2	3.14	<0.5	16	142	2	3.44
KAM092028		2.54	0.001	<0.2	1.66	3	<10	200	<0.5	<2	1.42	<0.5	10	52	2	2.18
KAM092029		2.66	0.002	<0.2	0.70	4	<10	70	<0.5	<2	0.93	<0.5	4	9	2	0.83
KAM092030		0.06	0.263	0.4	0.40	481	<10	600	<0.5	<2	1.08	<0.5	4	44	37	4.01
KAM092031		2.73	0.001	<0.2	2.18	3	<10	310	0.5	<2	2.27	<0.5	19	112	12	2.74
KAM092032		2.48	0.002	<0.2	2.19	4	<10	320	0.6	<2	3.59	<0.5	31	110	17	2.97
KAM092033		2.50	0.004	<0.2	1.95	2	<10	230	0.6	<2	1.62	<0.5	14	99	1	2.50
KAM092034		2.57	0.003	<0.2	1.11	2	<10	100	<0.5	<2	1.19	<0.5	7	42	2	1.28
KAM092035		2.63	0.002	<0.2	2.19	3	<10	260	0.7	<2	2.15	<0.5	15	104	3	2.47
KAM092036		2.75	0.001	<0.2	1.84	3	<10	150	0.6	<2	1.58	<0.5	11	43	6	2.12
KAM092037		2.63	<0.001	<0.2	1.74	<2	<10	180	<0.5	<2	1.25	<0.5	10	35	1	2.12
KAM092038		2.58	0.001	<0.2	1.84	4	<10	200	0.5	<2	1.65	<0.5	13	37	9	2.46
KAM092039		2.73	0.002	<0.2	2.22	3	<10	330	0.6	<2	1.68	<0.5	16	62	8	2.68
KAM092040		0.06	0.001	0.6	1.68	4	<10	110	<0.5	<2	0.91	<0.5	10	32	22	2.57
KAM092041		2.69	<0.001	<0.2	1.89	4	<10	240	0.6	<2	2.20	<0.5	10	65	3	2.23
KAM092042		2.68	0.001	<0.2	1.31	3	<10	160	<0.5	<2	1.97	<0.5	13	111	5	1.54
KAM092043		2.53	0.005	<0.2	2.85	32	<10	330	0.5	<2	5.15	<0.5	48	338	73	3.52
KAM092044		2.49	0.002	<0.2	3.22	16	<10	400	0.7	<2	3.23	<0.5	22	126	13	4.24
KAM092045		2.77	0.002	<0.2	2.56	19	<10	360	0.8	<2	3.66	<0.5	18	72	14	3.47



Page: 5 - B  
Total # Pages: 5 (A - C)  
Finalized Date: 28-AUG-2012  
Account: KAMGOL

**CERTIFICATE OF ANALYSIS    WH12186475**

Sample Description	Method Analyte Units LOR	ME-ICP41	ME-ICP41	ME-ICP41	ME-ICP41	ME-ICP41	ME-ICP41	ME-ICP41	ME-ICP41	ME-ICP41	ME-ICP41	ME-ICP41	ME-ICP41	ME-ICP41	ME-ICP41	
		Ga	Hg	K	La	Mg	Mn	Mo	Na	Ni	P	Pb	S	Sb	Sc	Sr
		ppm 10	ppm 1	% 0.01	ppm 10	% 0.01	ppm 5	ppm 1	% 0.01	ppm 1	ppm 10	ppm 2	% 0.01	ppm 2	ppm 1	ppm 1
KAM092016		10	<1	1.16	10	1.99	723	1	0.05	187	660	5	0.03	<2	6	86
KAM092017		10	<1	0.95	10	2.02	560	<1	0.05	213	550	6	0.08	<2	7	74
KAM092018		10	<1	1.29	10	2.50	572	<1	0.08	80	580	2	0.02	<2	7	46
KAM092019		10	1	1.44	<10	2.78	773	<1	0.09	98	720	4	0.02	<2	6	63
KAM092020		<10	<1	0.13	<10	0.78	418	1	0.09	21	640	2	0.06	<2	5	42
KAM092021		10	<1	1.20	10	2.29	665	<1	0.08	35	520	2	0.01	<2	6	56
KAM092022		<10	<1	0.63	20	0.88	277	<1	0.06	16	320	<2	0.01	<2	2	22
KAM092023		<10	<1	0.25	30	0.25	114	<1	0.08	<1	240	2	0.02	<2	1	8
KAM092024		<10	<1	0.55	20	0.73	219	<1	0.08	7	330	2	0.02	<2	2	14
KAM092025		10	<1	0.77	10	2.44	834	<1	0.14	70	800	<2	0.10	<2	6	46
KAM092026		10	<1	1.16	<10	2.33	650	<1	0.09	52	600	<2	0.15	<2	4	59
KAM092027		10	1	1.07	<10	2.31	749	<1	0.15	59	870	<2	0.02	<2	5	59
KAM092028		10	<1	1.01	20	1.25	376	<1	0.09	20	470	<2	0.04	<2	3	31
KAM092029		<10	<1	0.43	30	0.36	192	<1	0.08	1	260	<2	0.02	<2	1	30
KAM092030		<10	4	0.10	<10	0.03	79	14	0.04	14	150	13	0.23	28	1	77
KAM092031		<10	1	1.26	<10	2.04	465	<1	0.07	33	910	2	0.21	<2	3	53
KAM092032		10	<1	1.25	<10	2.05	624	<1	0.08	39	940	3	0.42	<2	3	60
KAM092033		<10	<1	1.24	10	1.80	466	<1	0.09	19	690	<2	0.03	<2	4	48
KAM092034		<10	<1	0.62	20	0.83	237	<1	0.08	16	390	<2	0.02	<2	2	97
KAM092035		10	<1	1.41	10	2.00	457	<1	0.05	43	600	<2	0.02	<2	3	125
KAM092036		<10	<1	0.98	10	1.50	418	<1	0.07	16	560	<2	0.02	<2	3	59
KAM092037		10	1	1.10	20	1.35	395	<1	0.08	11	580	<2	0.03	<2	3	31
KAM092038		10	1	1.33	20	1.36	467	<1	0.06	14	550	<2	0.08	<2	2	35
KAM092039		10	<1	1.52	20	1.92	517	<1	0.06	18	730	<2	0.05	<2	3	41
KAM092040		10	<1	0.13	<10	0.80	424	1	0.09	21	640	2	0.06	<2	5	43
KAM092041		<10	<1	1.37	20	1.56	559	<1	0.06	15	590	<2	0.06	<2	2	42
KAM092042		<10	<1	0.87	20	1.20	386	13	0.06	12	330	2	0.03	<2	2	30
KAM092043		10	<1	1.88	<10	2.94	830	1	0.05	207	450	3	0.04	<2	8	65
KAM092044		10	<1	1.67	10	2.78	864	1	0.06	56	780	2	0.23	<2	7	51
KAM092045		10	1	1.57	20	2.13	778	<1	0.06	27	710	4	0.25	<2	5	63



ALS Canada Ltd.  
 2103 Dollarton Hwy  
 North Vancouver BC V7H 0A7  
 Phone: 604 984 0221 Fax: 604 984 0218 www.alsglobal.com

To: KAMINAK GOLD CORPORATION  
 1020 - 800 WEST PENDER STREET  
 VANCOUVER BC V6C 2V6

Page: 5 - C  
 Total # Pages: 5 (A - C)  
 Finalized Date: 28-AUG-2012  
 Account: KAMGOL

Project: Coffee

**CERTIFICATE OF ANALYSIS WH12186475**

Sample Description	Method Analyte Units LOR	ME-ICP41	ME-ICP41	ME-ICP41	ME-ICP41	ME-ICP41	ME-ICP41
		Th	Ti	Ti	U	V	Zn
		ppm 20	% 0.01	ppm 10	ppm 10	ppm 1	ppm 10
KAM092016		<20	0.19	<10	<10	56	<10
KAM092017		<20	0.19	<10	<10	59	<10
KAM092018		<20	0.21	<10	<10	60	<10
KAM092019		<20	0.21	<10	<10	70	<10
KAM092020		<20	0.14	<10	<10	63	20
KAM092021		<20	0.20	<10	<10	61	<10
KAM092022		30	0.06	<10	<10	20	<10
KAM092023		30	0.01	<10	<10	4	<10
KAM092024		30	0.07	<10	<10	16	<10
KAM092025		<20	0.12	<10	<10	62	<10
KAM092026		<20	0.25	<10	<10	61	<10
KAM092027		<20	0.20	<10	<10	58	<10
KAM092028		20	0.15	<10	<10	35	<10
KAM092029		30	0.06	<10	<10	5	<10
KAM092030		<20	0.01	10	<10	29	10
KAM092031		<20	0.27	<10	<10	49	<10
KAM092032		<20	0.24	<10	<10	55	<10
KAM092033		<20	0.22	<10	<10	50	<10
KAM092034		20	0.14	<10	<10	20	<10
KAM092035		<20	0.21	<10	<10	45	<10
KAM092036		<20	0.17	<10	<10	36	<10
KAM092037		<20	0.18	<10	<10	38	<10
KAM092038		20	0.16	<10	<10	33	<10
KAM092039		<20	0.21	<10	<10	51	<10
KAM092040		<20	0.15	<10	<10	65	20
KAM092041		20	0.18	<10	<10	36	<10
KAM092042		20	0.15	<10	<10	31	<10
KAM092043		<20	0.26	<10	<10	81	<10
KAM092044		<20	0.25	<10	<10	70	<10
KAM092045		<20	0.22	<10	<10	57	<10